

RIZE

ENTERPRISES, LLC

THE KWIK-LOC™ SYSTEM



Fencing and Trellising Guide





The Kwik-Loc™ System

Rize Enterprises is a privately owned company based in Long Island, NY. We are the largest US manufacturer of wire joiners. Our HQ in NY houses our in house engineering department, marketing department, sales and customer service.

Since our start in 2002, we have steadily grown into one of the leaders in the manufacture and distribution of wire joiners and accessory products for the fencing and trellising market. Our products are used around the world from the Napa Valley to Bordeaux and from Spain to Australia.

Sales of Kwik-Loc are focused on leading distributors in their field and we are proud to work with industry specialists who know how to use and install the finest wire joiners.

Using a proven technology, our improved design incorporates our patented quick release mechanism. This provides the user with a product that is easy to tighten and release.

All our products are thoroughly tested at our Long Island facility and by independent testing laboratories.

TABLE OF CONTENTS

	PAGE
ABOUT RIZE	1
FEATURES & BENEFITS	2
PRODUCTS	2
KWIK-LOCS	3
HOW IT WORKS	3
PRODUCT RANGE	3
TENSIONING TOOL	4
FENCING APPLICATIONS	5
TRELLISING APPLICATIONS	6
PERFORMANCE SPECIFICATIONS	7
MANUFACTURER'S RECOMMENDATIONS	7

PRODUCTS

KL200 KWIK-LOC:

The KL200 can be used for end post assemblies and H brace assemblies for 8-10 gauge wire or equivalent.



KL200

KL150 KWIK-LOC:

The KL150 is installed on stock fence for use with 10-13 gauge wire, it can also be used for cordon and drip wires.



KL150

KL100 KWIK-LOC:

The KL100 was introduced to be used on 16-14 gauge wire for use on electric fence and plain wire for fruiting or canopy wires.



KL100

WIRE CUTTER:

When cutting wire cable it is important to use a recognized wire/cable cutter such as the Rize cutter detailed here. This will ensure that the form of the rope is maintained prior to insertion in the Kwik-Loc. Wire Cutter features; Storage catch, 3/16" cutting capacity, springloaded, 5" long handles, hardened steel blades, and vinyl coated handles.



CABLE CUTTER

TENSIONING TOOL:

The tensioning tool is used to tension and retension the wire.



TENSIONING TOOL

FEATURES & BENEFITS

- **STRONG:** As strong as the wire
- **DURABLE:** Weatherproof, made of zinc alloy
- **VERSATILE:** Many uses
- **FAST:** Installs in seconds, no need for tools
- **REMOVABLE:** Can be re-used
- **EASY:** Self-locking, simple push-fit
- **ADJUSTABLE:** Easily adjustable with exposed adjustment pin
- **SAFE:** Consistent, reliable and efficient

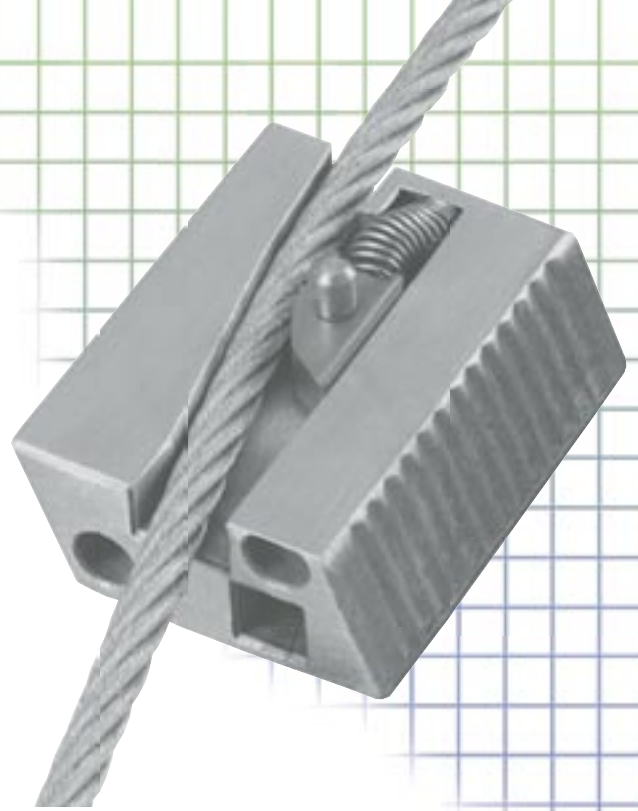
KWIK-LOCS

GENERAL DESCRIPTION:

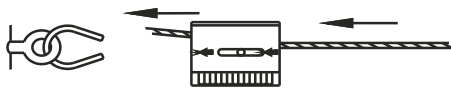
The Rize Kwik-Loc is a fast and reliable way to join tension wire. It can be used as both an anchor and a joiner. The Kwik-Loc is a self-locking device that can be easily adjusted and released with no need for other tools, saving time and money on installation and retensioning.

KEY BENEFITS

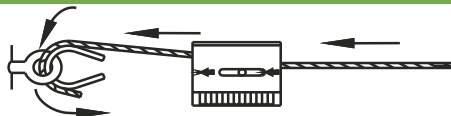
- **Zinc Housing**
One piece die cast Zinc type Zamac 5 combines major anti-corrosion properties with strength and consistent manufacturing quality.
- **Locking Wedges**
An oil impregnated sintered steel locking wedge is seated in each of two channels. Both wedges incorporate a release pin for easy adjustment. Each wedge makes contact with the wire rope using serrated teeth. These teeth press onto the wire rope and spread the load across the length of the wedge, maximizing grip strength.
- **Stainless Steel Springs**
Each spring is manufactured of type 302 S26 stainless steel.



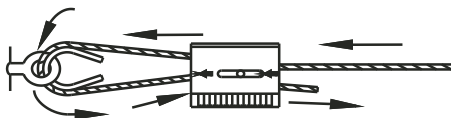
HOW IT WORKS



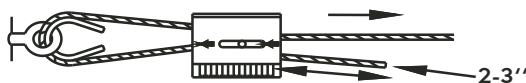
Pass the wire through the Kwik-Loc



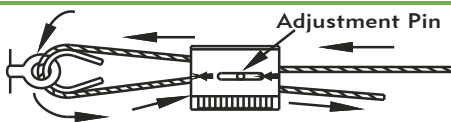
Loop the wire through the anchor



Pass the wire back through the Kwik-Loc



Apply tension



To adjust, take the load off and pull the wire tail slightly to disengage the pawl teeth, then release the pawl using the adjustment pin

PRODUCT RANGE

Model	Plain Wire		Barbed Wire		Working Load	
	USA	Metric	USA	Metric	USA	Metric
KL100	14 - 16 ga.	1.5 - 2.3 mm			600 lbs	275 kg
KL150	10 - 13 ga.	2.3 - 3.0 mm			750 lbs	340 kg
KL200			12.5 ga.	2 x 2.5 mm	600 lbs	275 kg
KL200	8 - 11 ga.	3 - 4 mm			1400 lbs	640 kg

TENSIONING TOOL

TENSIONING TOOL:

The ground we farm is not always flat. It may be necessary to use a Kwik-Loc tensioning tool to help initially tighten and maintain tension on the wire. The tensioning tool has been designed to withstand the rigors of today's farming and is warranted against manufacturing defects. As with all heavily used hand tools, over time the tool will wear and repair or replacement will be required.



GENERAL DESCRIPTION

- The tensioning tool is designed to apply tension of up to 600 lbs on wire that is terminated by a Kwik-loc.
- The tensioning tool works by holding the Kwik-loc body and pulling the wire through the Kwik-loc using the cam and anvil.
- The powerful lever action will tension and retention the wire in seconds.
- The tensioning tool can be used on all sizes of Kwik-locs.

HOW TO USE

1. Open the handles fully until the cam opens
2. Place the Kwik-loc in the mouth of the tensioning tool
3. Feed the wire through the cam and anvil
4. Pull handles together, pulling the wire through the Kwik-loc
5. Repeat until sufficient tension is applied
6. Do not over tension the wire

APPLICATIONS

- A loop anchor at the end post
- An in line splice
- Repairs of broken wire
- Field fence
- Plain wire
- Electric fencing



FENCING APPLICATIONS

■ FIELD FENCE

■ PLAIN WIRE

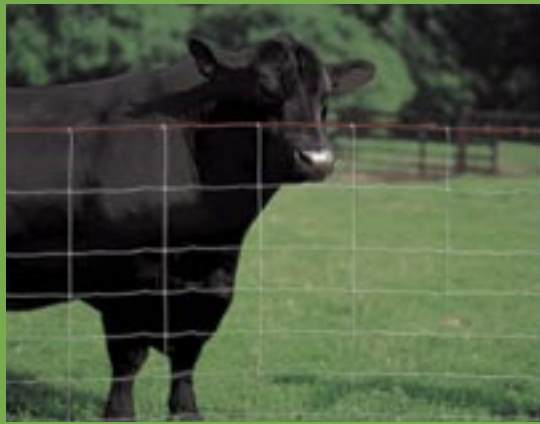
■ BARBED WIRE

■ ELECTRIC

■ LOOP ANCHOR

■ IN LINE JOIN

■ REPAIR



STOCK FENCING/ DEER FENCE/ HORSE FENCE:

The Kwik-Loc makes joining and tensioning stock fence easy. To erect a fence using the Kwik-Loc, install the Kwik-Loc on each horizontal wire on one roll of fence then insert the wire from the adjoining roll for a fast join. Then use the tensioning tool to apply tension to the wire. It is easy to repair the fence by inserting a Kwik-Loc into a broken section and applying tension with the tensioning tool.

PLAIN WIRE:

Plain wire used for fencing stock over large distances. It is easy to install, maintain and repair the wire with the Kwik-Loc. This makes a cost effective way to hold your animals.

ELECTRIC FENCING:

Using the Kwik-Loc for electric fencing is a breeze. Using an inexpensive insulator the Kwik-Loc can be used in a loop anchor in seconds to produce a long term or temporary fence. The metal properties of the unit, allow it to be conductive and therefore is fast and easy to install and remove. The Kwik-Loc can be used on both hard wire and Poly wire.



H BRACE:

Applying tension at an H brace or end post is easy using the KL200 and a length of 10 gauge wire or 3/16 inch wire rope. Using it in conjunction with the tensioning tool makes it easy to finish your fence.

BARBED WIRE:

Kwik-Loc's can be used to make joining and tensioning barbed wire safe and easy. With its simple push fit mechanism there is no bending of the wire that could create a weak point and therefore a safety hazard.

PLASTIC WIRE:

Kwik-Loc can be used in low tension applications for plastic wire for sizes from 16 gauge through 10 gauge.



TRELLISING APPLICATIONS

FRUITING WIRE CORDON WIRE IRRIGATION WIRE ANCHOR LOOP ANCHOR IN LINE JOIN REPAIR

FRUITING/ CANOPY WIRE:

The KL100 is an especially good fit for this application as it is easy to release without the need for tools.



CORDON WIRE:

The KL150 is a fast and easy way to join and tension the cordon wire using a loop anchor and tensioning tool.



IRRIGATION WIRE:

The KL150 is perfect for keeping the wire taut when attaching a drip hose to your wire for easy irrigation.



END POST ANCHORS:

Tying down end posts to earth anchors is fast and easy with the KL200. Use it in conjunction with 3/16 inch cable or 10 gauge wire.



PERFORMANCE SPECIFICATIONS

■ All Kwik-Locs have been independently tested to five times their allowable working load by one or more of the following independent laboratories:

RADCO Inc, Long Beach CA
New York Testing Laboratories

SMACNA Testing and Research Institute
Underwriters Laboratories



■ All Kwik-Locs have been tested to UL 1598 and are listed under File# E246601.

MANUFACTURER'S RECOMMENDATIONS

- DO NOT USE FOR LOADS OUTSIDE THE STATED RANGE OF THE PRODUCT
- DO NOT EXCEED THE SAFE WORKING LOAD OF THE PRODUCT
- DO NOT USE ON COATED WIRE
- DO NOT APPLY PAINT OR OTHER COATING
- DO NOT APPLY LUBRICANT
- DO NOT USE FOR LIFTING
- KEEP THE PRODUCT CLEAN AND FREE FROM DIRT
- REMOVE ANY DAMAGED WIRE END PRIOR TO INSERTING INTO THE KWIK-LOC
- DO NOT USE IN CHLORINATED ATMOSPHERES

Distributed By:



© 2005 Rize Enterprises, LLC
Printed in USA 11/2005
BZ000003